

# Eugeen Van Mieghem: List of Works – Large Print

## Gallery 17: Antwerp and the River Scheldt

---



### **Sack Mender Before a Dock, c.1926**

Oil on canvas, 69 x 79cm

Province of Antwerp

The port of Antwerp was exceptional for the large number of women who worked on the docks. From the 1860s women replaced men, who had been demanding higher wages, in areas such as mending sacks, cleaning hides and picking coffee beans. There were an estimated 2000 women working in the port around 1900.

---



### **Strangers, 1903**

Oil on cardboard, 26 x 58cm

Private collection

Between 1873 and 1935 the Red Star Line transported almost three million emigrants from Antwerp to North America, many of whom were Jewish migrants from Eastern Europe. Van Mieghem lived in close proximity to this vast movement of people as in 1893 the Red Star Line built a warehouse opposite Eugeen's mother's café. There every migrant underwent a medical check and their clothes and luggage were disinfected. Van Mieghem's painting "Vreemden" ("strangers") records the traffic both ways – the port as a point of contact between cultures.

---



### **View of the Port, 1912**

Pastel and charcoal, 28 x 39cm

Private collection

---



### **Antwerp Roadstead, c.1922**

Oil on canvas, 60 x 100cm

Eugeen Van Mieghem Museum

The phrase "the Roads of Antwerp" or "Antwerp Roadstead" refers specifically to the view of Antwerp from the opposite bank of the Scheldt, with the distinctive spire of the Cathedral of Our Lady towering over the city.

---



### **The Launch of the Elisabethville II, May 1921, 1921**

Oil on cardboard, 40.5 x 61cm

Private collection

The Elisabethville II was an ocean liner built in 1921 for Compagnie Belge Maritime du Congo. The ship was used on the Antwerp – Matadi route and was later requisitioned by as a troopship during World War II.

---



### **At the Scheldt, 1925**

Oil on panel, 50 x 70cm

Private collection

---



**Evening at the Docks, 1928**  
Oil on canvas, 32 x 43cm  
Private collection

---



**Self-portrait, 1925**  
Crayon, 19.5 x 15cm  
Eugeen Van Mieghem Museum

---



**Artist at Work before the Roads of Antwerp, 1927**  
East-Indian ink, 8 x 18cm  
Private collection

---

## Gallery 16: The World of the Artist

---



**Augustine ill on the Promenade, 1904**  
Sanguine, 15 x 20cm  
Private collection

---



**Augustine with Little Eugene, 1903**  
Black chalk, 20.5 x 13.1cm  
Private collection

---



**Nude Back to Back, 1908**  
East Indian ink, 22 x 18cm  
Private collection

---



**A Skull, 1924**  
Black chalk, 27.2 x 21.3cm  
Eugeen Van Mieghem Museum

---



**The Studio, 1904**  
Black chalk, 10.5 x 13cm  
Private collection

---



**Augustine Pautre Painting, 1904**  
Charcoal or pastel on paper, 30 x 22cm  
Private collection

---



**Augustine Sick in Bed after 27th January, 1905**  
Black chalk, 12 x 20.5cm  
Private collection  
Augustine Pautre died in Brussels on 12 March 1905 at the age of 24.

---



**The Artist's Bed, 1914**  
Pencil, 10 x 15cm  
Eugeen Van Mieghem Museum

---



**The Alcove (Montevideostraat), 1914**

Oil on panel, 25 x 30cm

Private collection

Van Mieghem painted this view of his bed in an alcove having seen one of Van Gogh's bedroom paintings at the 1914 Kunst Van Heden ('Contemporary Art') exhibition in Antwerp. Montevideostraat was where the Van Mieghems built their second tavern after they were forced to move from Van Meterenkaai to accommodate expansion of the port. The street runs between the Kattendijkdok and the quays on the River Scheldt and then formed a border between the port and the residential city.

---



**An Interior, 1922**

Monotype, 19 x 16cm

Private collection

---



**An Interior, 1922**

Monotype, 17 x 15.5cm

Private collection

Monotype is a form of printmaking that is produced by drawing or painting on a smooth, non-absorbent surface from which a print is then taken. Monotyping produces a unique print – mono meaning one – as most of the ink is removed during the pressing. Subsequent printings may be possible, but they may differ greatly.

---



**Still Life (Interior of 30 St. Paulusstraat), 1924**

Monotype, 37.6 x 50cm

Private collection

On 10 November 1920 Van Mieghem married Marguerite Struyvelt, a nurse whom he had met while recovering from illness the previous year at a sanatorium in Brussels. In 1922 the couple moved to No. 30 Sint-Paulusstraat, a few hundred metres from the Van Meterenkaai where he was born and a short distance from the Academy where he taught from 1920.

---

## Gallery 15: The Pace of Modern Life

---



**Ladies in the Inner City, 1903**

Oil on canvas, 17 x 25cm

Private collection

---



**Two Sacksowers in Conversation, 1927**

Blue ink, 10.9 x 6.6cm

Private collection

---



**Fashionable Ladies, 1903**

Oil on cardboard, 39 x 49cm

Private collection

*Fashionable Ladies* and *Ladies in the Inner City* are examples of the works Van Mieghem made between 1902 and 1905 exploring the bustling activity of Antwerp city centre. The figure to the right facing the viewer is the artist's first wife, Augustine Pautre.

---



**Terrace on the De Keyserlei , c.1914**

Watercolour and black chalk,

16.9 x 21cm

Museum Plantin-Moretus/Prentenkabinet, Antwerp - UNESCO World Heritage  
The De Keyserlei is a street that leads from Antwerp's railway station towards the old town. It is home to the Café Hulstkamp which in Van Mieghem's day was a meeting place for artists and writers.

---



**In the Tavern, 1905**

Black chalk, 10.5 x 16.6cm

Private collection

---



**In a Dance-hall, 1913**

Watercolour and crayon or charcoal on paper, 46 x 34cm

Private collection

---



**Constantine Meunier, 1904**

Pencil, 17.4 x 10.5cm

Eugeen Van Mieghem Museum

Constantine Meunier (1831-1905) was a realist Belgian painter and sculptor, known for images of industrial labourers, including dock and mine workers. Both artists exhibited in the annual salons held by the artistic society *La Libre Esthétique*. Van Mieghem often used whatever materials were available and this portrait is drawn on the back of the stationery from his father's shipping agency.

---



**James Ensor, 1925**

Ink and coloured chalk, 23.1 x 16cm

Eugeen Van Mieghem Museum

James Ensor (1860-1949) was a Belgian painter and printmaker who was an important influence on expressionism and surrealism. The two artists exhibited together in the Kunst van Heden group shows. This portrait was made when Van Mieghem visited Ensor at Ostend while holidaying at Blankenberge in July 1925.

---



---

**Waiting (In Court), 1914**

Pencil and watercolour, 20 x 16cm

Private collection

While this work dates from 1914 Van Mieghem had between 1900 and 1905 drawn many studies of figures waiting in the courthouse. His courtroom scenes are reminiscent of the work of the French artist Jean-Louis Forain who exhibited with the Impressionists and favoured scenes of everyday life and modernity – the racetrack, theatres and cafés. After 1900 he produced many works featuring legal subjects. Forain was an early influence on Van Mieghem who had a photograph of the French artist in his studio.



---

**Children on the Banks of the Scheldt, 1923**

Oil on canvas, 37 x 48cm

Private collection



---

**Couple Walking along the Scheldt, 1902**

Pastel, 33 x 51cm

Eugeen Van Mieghem Museum



---

**3 February 1918, 1918**

Coloured lithograph, 45.5 x 33.8

Eugeen Van Mieghem Museum

---

## Gallery 15: The War Years (1914–1918)



---

**Attack!, 1914**

Wash, 24 x 34cm

Eugeen Van Mieghem Museum



---

**Three Russian Soldiers, 1917**

Pastel, 22 x 32cm

Eugeen Van Mieghem Museum



---

**The Red Cross, 1914**

Black and red chalk, 30 x 32cm

Private collection



---

**Fugitives: Old Woman with Little Girl, 1914**

Black crayon and pastel, 36 x 42cm

Private collection



---

**Refugees, 1915**

Pastel, 49 x 63cm

Eugeen Van Mieghem Museum





**Devastated Church, 1915**  
Oil on board, 56 x 74cm  
Private collection

---



**Embrace by Death, 1917**  
Black chalk, 37 x 25cm  
Private collection

---



**Refugees, 1914**  
Black chalk, 35 x 47cm  
Eugeen Van Mieghem Museum

---



**Refugees in a Boat, October 1914, 1914**  
Coloured chalk, 42.5 x 58cm  
Eugeen Van Mieghem Museum

---



**Food Distribution, 1916**  
Black chalk, 27.5 x 36cm  
Private collection

---

## Gallery 15

---



**Four Beggars, c.1903**  
Black chalk, 38.8 x 60.9cm  
Museum Plantin-Moretus/Prentenkabinet, Antwerp - UNESCO World Heritage

---



**A Sack Sewer in the Port, 1925**  
Oil on paper, 68 x 88cm  
Private collection

---



**Houses near the Water (Blankenberge), 1925**  
Oil on cardboard, 39 x 63cm  
Private collection  
Blankenberge is a seaside town near Bruges where Van Mieghem went on holiday in July 1925.

---



**Landscape, 1928**  
Oil on cardboard, 49 x 70cm  
Private collection

---

## Gallery 14: People of the Port



**In the Harbour on Sunday, 1912**  
Pastel, 56 x 70cm  
Private collection



**Old Boatman, 1908**  
Pencil, 36 x 25.6cm  
Private collection



**At the Melting Furnace, 1910**  
Black chalk, 34.7 x 25.5  
Private collection



**At the Docks, 1913**  
Pastel, 78 x 108cm  
Private Collection



**Ship in Dry-Dock, c.1924**  
Oil on paper, 50 x 44cm  
Private collection

Van Mieghem has emphasised the towering scale of the ship in dry-dock, which is a narrow basin that can be flooded to allow a ship to be floated in, then drained to allow it to rest on a dry platform. This allows for the construction, maintenance and repair of ships.



**Steamers and Three Masted-Ships in the Dock, c.1912**

Charcoal and pastel, 47.9 x 62cm  
Museum Plantin-Moretus/Prentenkabinet, Antwerp - UNESCO World Heritage



**Harbour Scene with a Crane, Grain Elevator and Ships, c.1912**

Charcoal and pastel, 47.5 x 62.2cm  
Museum Plantin-Moretus/Prentenkabinet, Antwerp - UNESCO World Heritage



**Ships in the Port, c.1912**  
Charcoal and coloured chalk, 63 x 48cm  
Private collection



**Ships in the Port, c.1924**  
Monotype, 28 x 33cm  
Eugeen Van Mieghem Museum



**In the Harbour, c.1925**  
Oil on canvas, 48 x 69cm  
Private collection



**At the Scheldt (Waiting for the Ferry), 1911**

Black chalk, 28 x 43cm  
Eugeen Van Mieghem Museum



**Mother with Child along the Scheldt, 1925**

Ink and watercolour, 13.7 x 21cm  
Private collection



**The Loading of a Ship, 1904**

Black chalk, 9 x 13.7cm  
Eugeen Van Mieghem Museum



**The Embrace, 1899**

Chalk, 12.7 x 15.2cm  
Private collection



**Dock, 1904**

Coloured chalk, 18.3 x 13cm  
Museum Plantin-Moretus/Prentenkabinet, Antwerp - UNESCO World Heritage



**At the Scheldt, 1912**

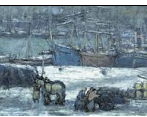
Watercolour and black chalk, 42 x 62cm  
Private collection



**The Flood, 1907**

Black chalk, 11.7 x 16cm  
Private collection

Van Mieghem made a number of sketches of a flood and its aftermath in 1907. That was also the year in which a major strike took place among Antwerp's harbour workers. The Van Mieghems' café suffered during this period.



**Winter at the Kattendijkdok, c.1913**

Gouache, crayon and charcoal on paper, 51 x 70cm  
Private collection

The Kattendijkdok was constructed in the 1850s. It was adjacent to the Van Mieghems' tavern on Montevideostraat which was situated between the dock and the River Scheldt. Van Mieghem later moved to the eastern side of Kattendijkdok when his mother sold the tavern after World War I.

**Exhibition supported by Dublin Port Company**



Comhairle Cathrach  
Bhaile Átha Cliath  
Dublin City Council



ARTIST *as*  
WITNESS  
*migrations*



PERS  
PECT  
IVES



COMHLACHT CHALAFORT  
ÁTHA CLIATH  
DUBLIN PORT COMPANY