

What to expect when we visit the Hugh Lane Gallery.



The Hugh Lane Gallery is a big building on Parnell Square North at the top of O'Connell Street. There are lots of artworks inside.

At the entrance:



There is a ramp and steps leading up to a big blue door.



This is where we enter and exit the gallery.



Inside there is a reception desk where we can ask for help or information. The sound in this space can echo a bit.

Here we can find gallery maps and information on exciting events and workshops.





There are accessible toilets at the entrance and on the Lower Ground Floor.



We can put our belongings in these yellow and red lockers on the Lower Ground Floor.

Going to the talk with AlanJames Burns:



We can use the stairs or lifts to get to the Lecture Space on the 1st Floor.



In the lift:

Press B for the Lower Ground Floor for the café lockers and accessible toilets.

Press 0 for the Ground Floor, where we can find reception, galleries, Francis Bacon's Studio, the bookshop and accessible toilets.

Press 1 for Floor 1, where we can find The Lecture Space, and Galleries.

Press 2 for the Floor 2, where we can find the Education Space. There is an accessible toilet in this room.

When you get to the 1st Floor, take a right and go through this door.



This is a heavy door that opens out.

After you walk through the door, go left and you will find our Lecture Space.



Our Lecture Space looks like this inside. The lights may be dimmer, once the talk begins.



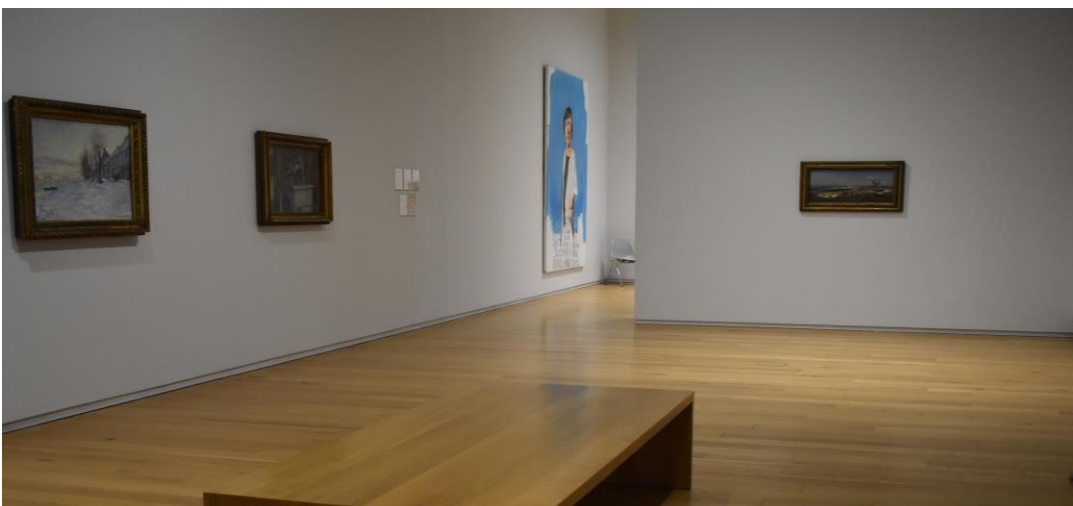
This AlanJames Burns, who is giving the talk. He will be introduced by Siobhan Mooney from Basic Space.

Exploring the gallery, before or after the talk:



On the Ground Floor we can find Francis Bacon's Studio.

When we walk through the gallery we will see paintings...





...and sculptures. There is so much to look at, but remember not to touch.



We can sit on these benches and look or sketch for as long as we want.

If it gets too busy or warm for us we can find a more peaceful space.



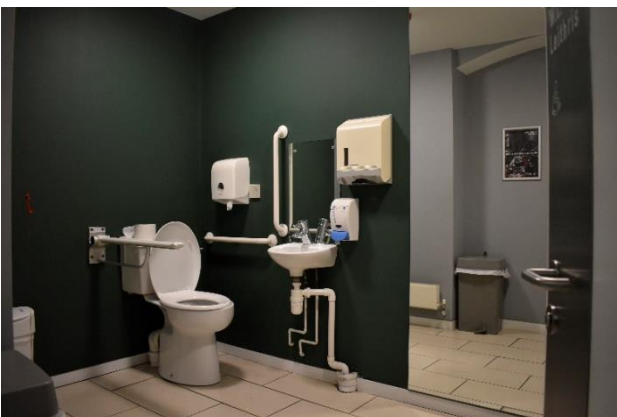
And if we need help we can ask the attendants who work in the gallery.



On the Ground Floor we can also find the bookshop.



On the Lower Ground Floor we can find the Café, with indoor and outdoor seating.



The gallery is fully wheelchair accessible.